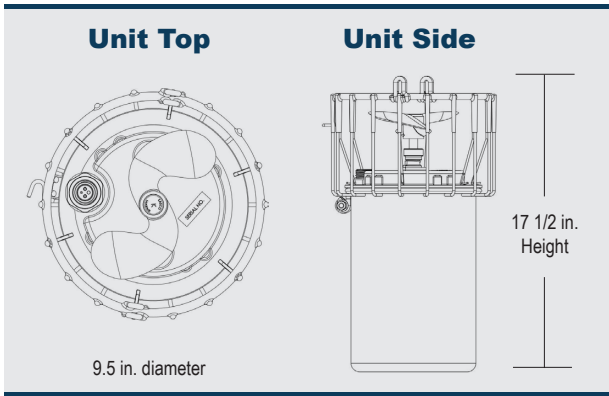


UNIT DIMENSIONS



UNIT SPECIFICATIONS

Sizes Available	1/2, 3/4, 1 and 2HP
Electrical Requirements	<ul style="list-style-type: none"> • 120V, single phase, 60Hz (1/2 - 1 HP) • 208-240V, single phase, 60Hz (3/4 - 2HP) • Solar powered option, contact for details
120V AMPS	<ul style="list-style-type: none"> • 1/2HP - 5.7 • 3/4HP - 7 • 1HP - 9.1
208-240V AMPS	<ul style="list-style-type: none"> • 3/4HP - 3.5 • 1HP - 4.5 • 2HP - 9
Lubrication	Food-grade mineral oil
Cord Lengths	Stub (32 in.), 50 ft., 100 ft., 200 ft.
Warranty	3 years (mixer, mount & control panel) Optional extended warranty available

© Kasco, 03/2021

Kasco[®]

Axis Construction, LP

A Kasco Distributor
for Texas

Kasco[®]

CERTISAFE™ MIXERS

Active Tank Mixers



AxisConstructionLP.com
Contact (817) 439-9888
Joe Swinnea

CertiSafe™ Mixers

Increase Water Quality & Protect Your Tanks

The CertiSafe™ Tank Mixer for potable water is certified and tested to strict NSF/ANSI 61 & 372 standards and designed for use in municipal water storage tanks and reservoirs, 20,000 gallons and larger. This tank mixer is easy to install, and can be mounted using a floor, suspension, or pipe mount. CertiSafe Mixers are ETL Listed to UL and CSA standards.

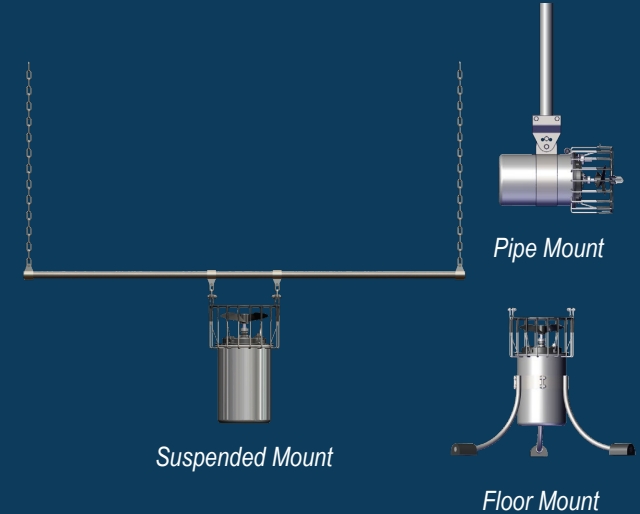
The tank mixer features a durable, stainless steel body combined with a domed stainless steel top, ensuring it will withstand continual use in your tank environments. It includes top safety features with a food grade mineral oil lubricant and a double mechanical seal.

- Improves water quality
- Eliminates ice formation
- Minimizes residual loss
- Reduces thermal and chemical stratification
- Reduces occurrences of taste and odor problems
- Reduces nitrification risk in chloraminated water
- Lowers the rate of disinfection by-product (DBP)
- Lowers the rate of sediment accumulation



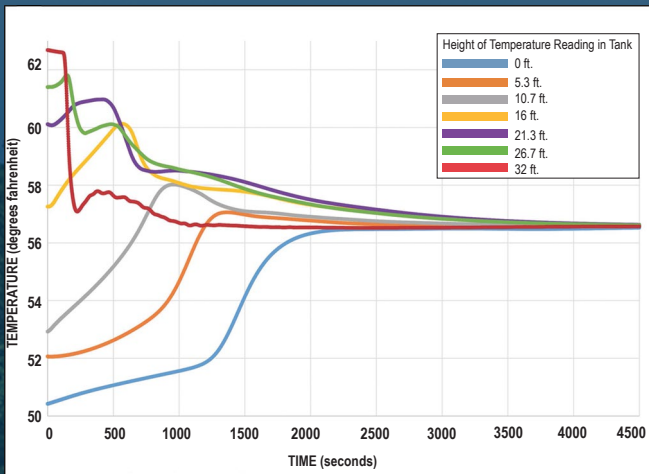
MOUNTING

Install Kasco CertiSafe™ mixers in elevated and ground storage tanks with the available suspended mount, pipe mount and floor mount mounting options.

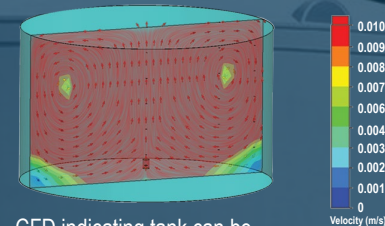
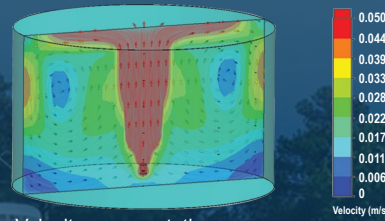


MIXING CAPABILITIES

Computational fluid dynamics (CFD) and test results using a 3400C61 (3/4HP) CertiSafe™ mixer to mix a .5 million gallon tank.



Results from thermal testing shows all layers of the tank converged within 40 minutes.



CONTROL & MONITORING

Easily control and monitor your mixer with the available control panels. Designed for easy installation and operation, all panels include an H-O-A operator switch, LED indicator lights, SCADA I/O for remote control and monitoring, and automatic shut off feature if tank level drops below operating level.

